

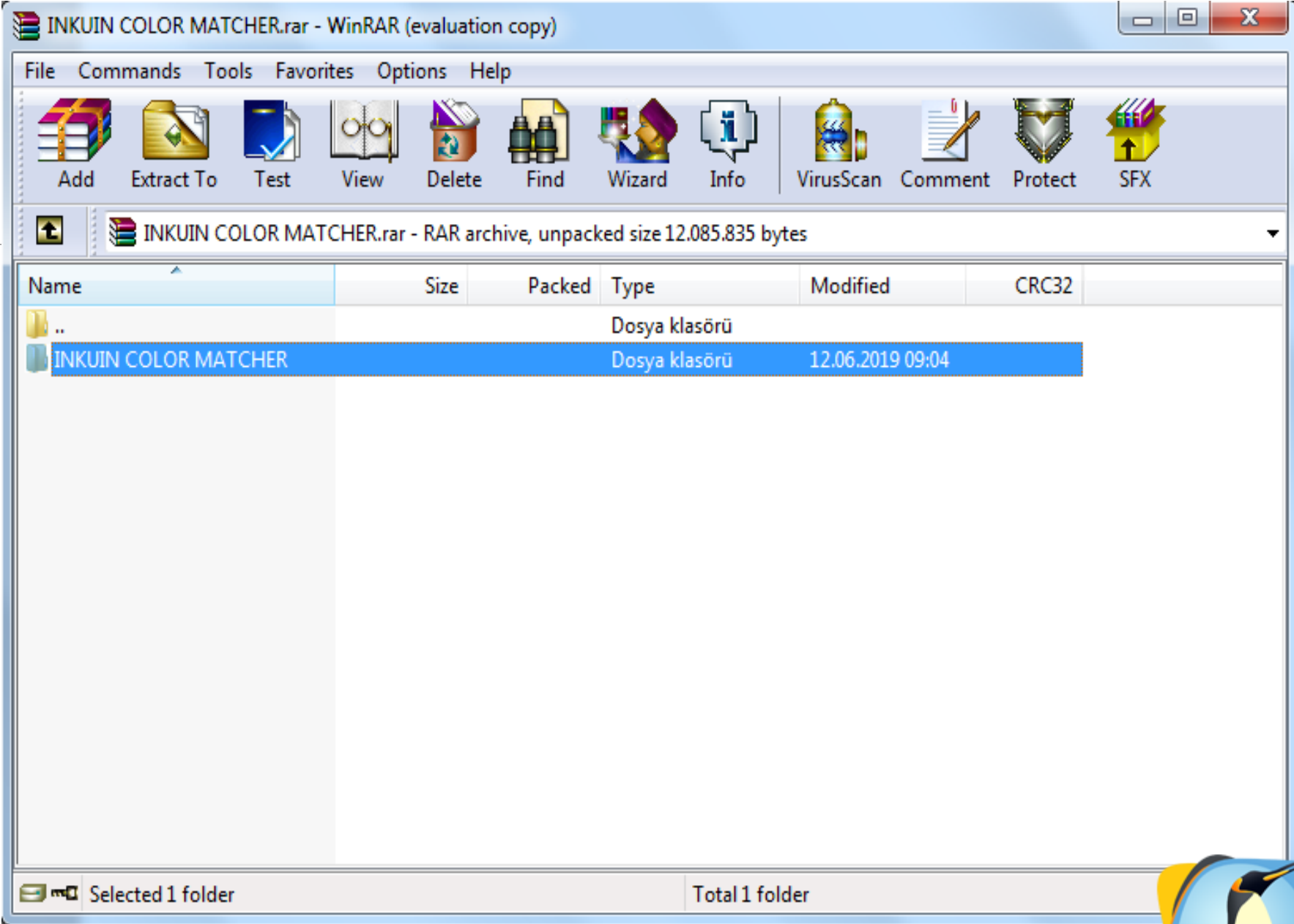
# INKUIN COLOR MATCHER

---

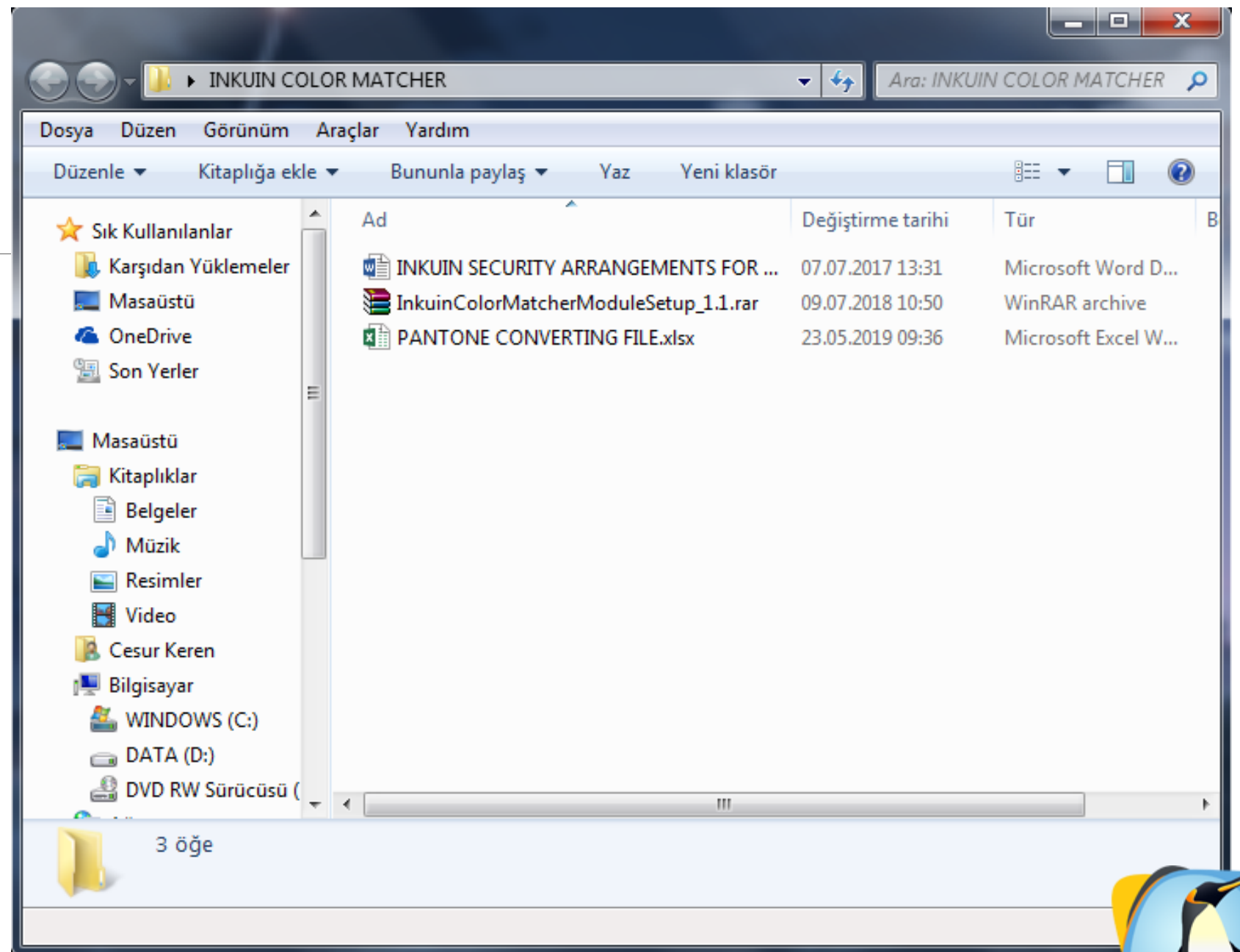
INSTRUCTIONS FOR USING SOFTWARE



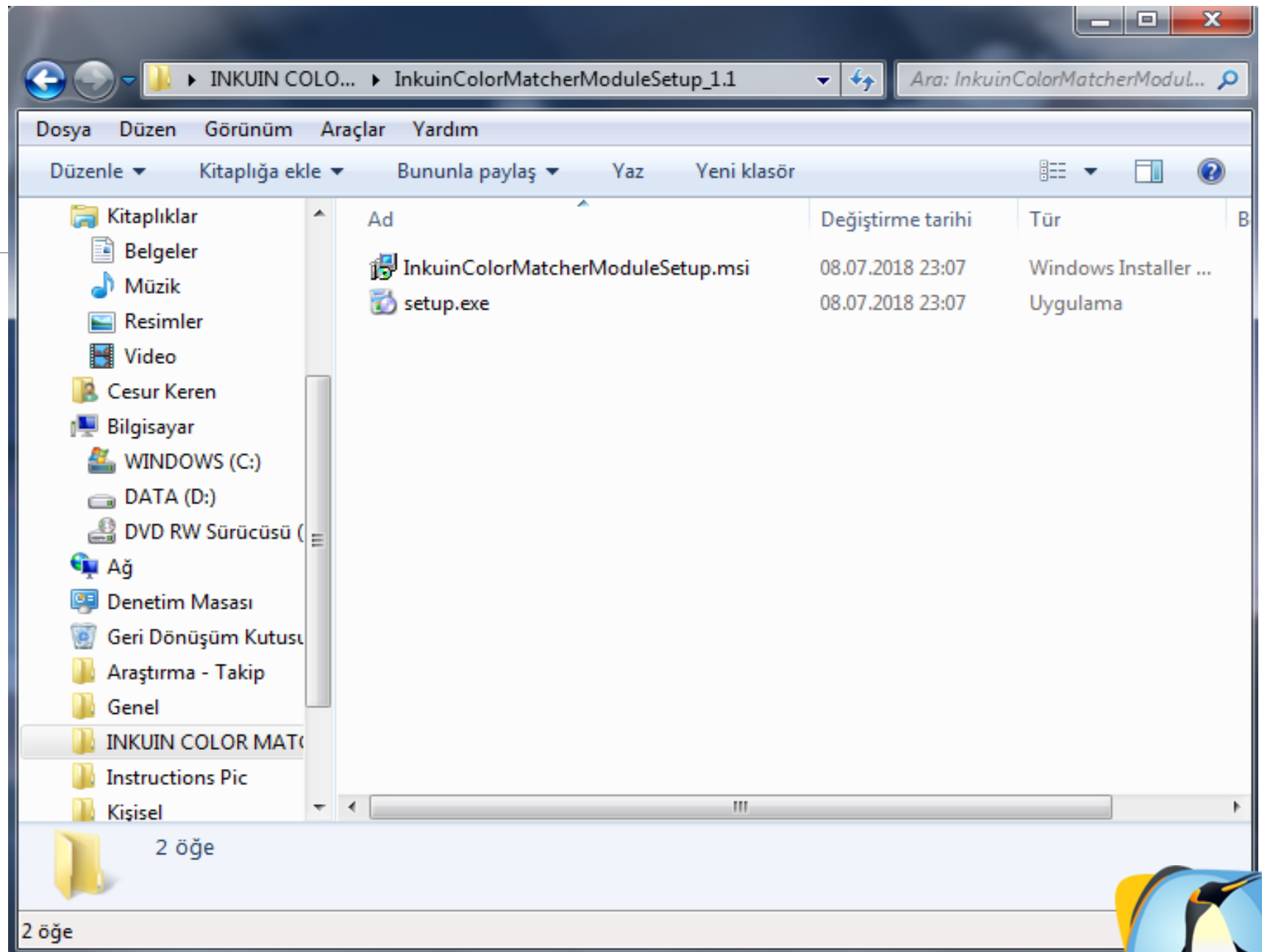
1) Extract the «Inkuin Color  
Matcher».rar file to your  
desktop.



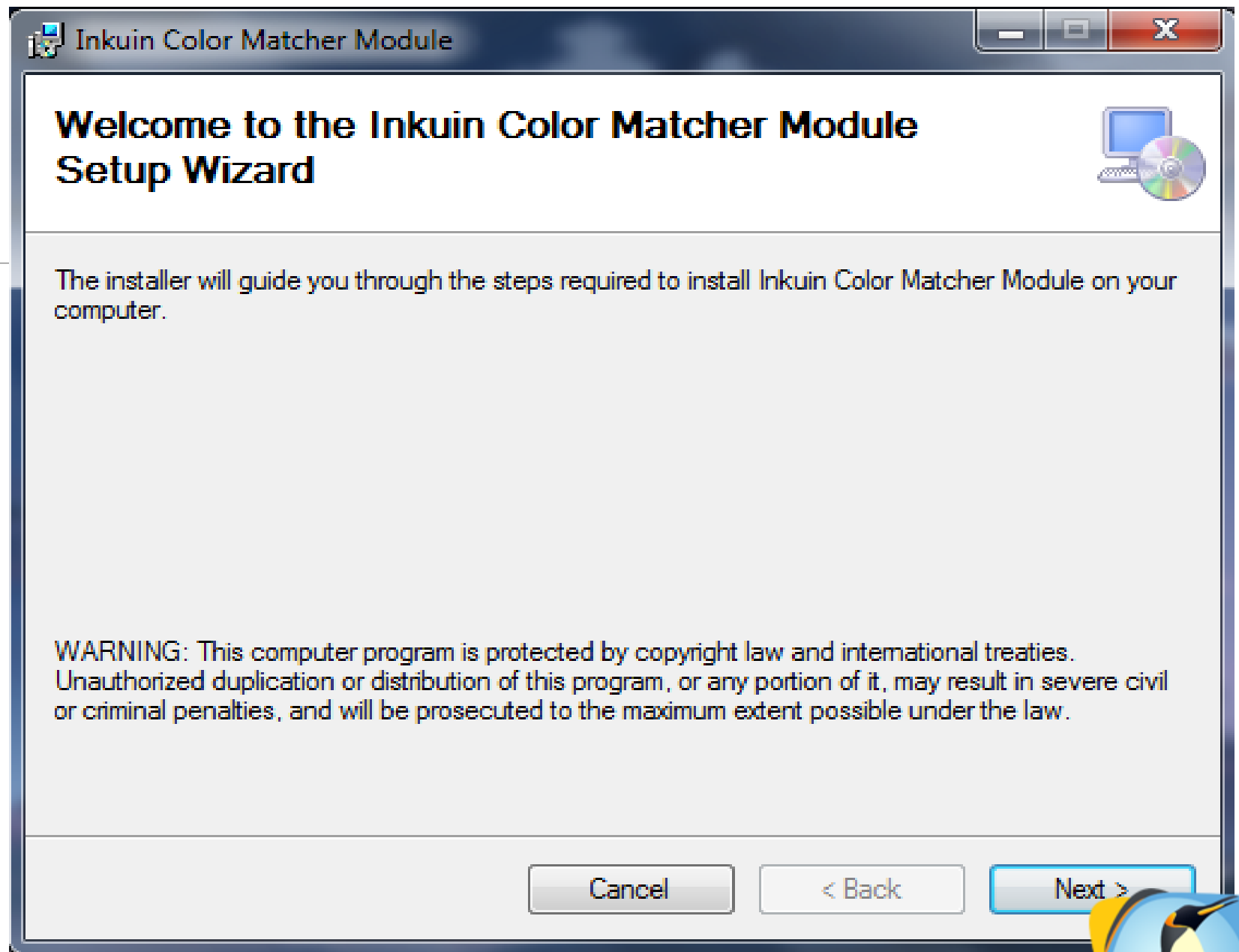
2) You will see related documents in the folder. Extract «InkuinColorMatcherModuleSetup\_1.1.rar» file to continue.



3) After your extraction, run setup.exe file to continue.

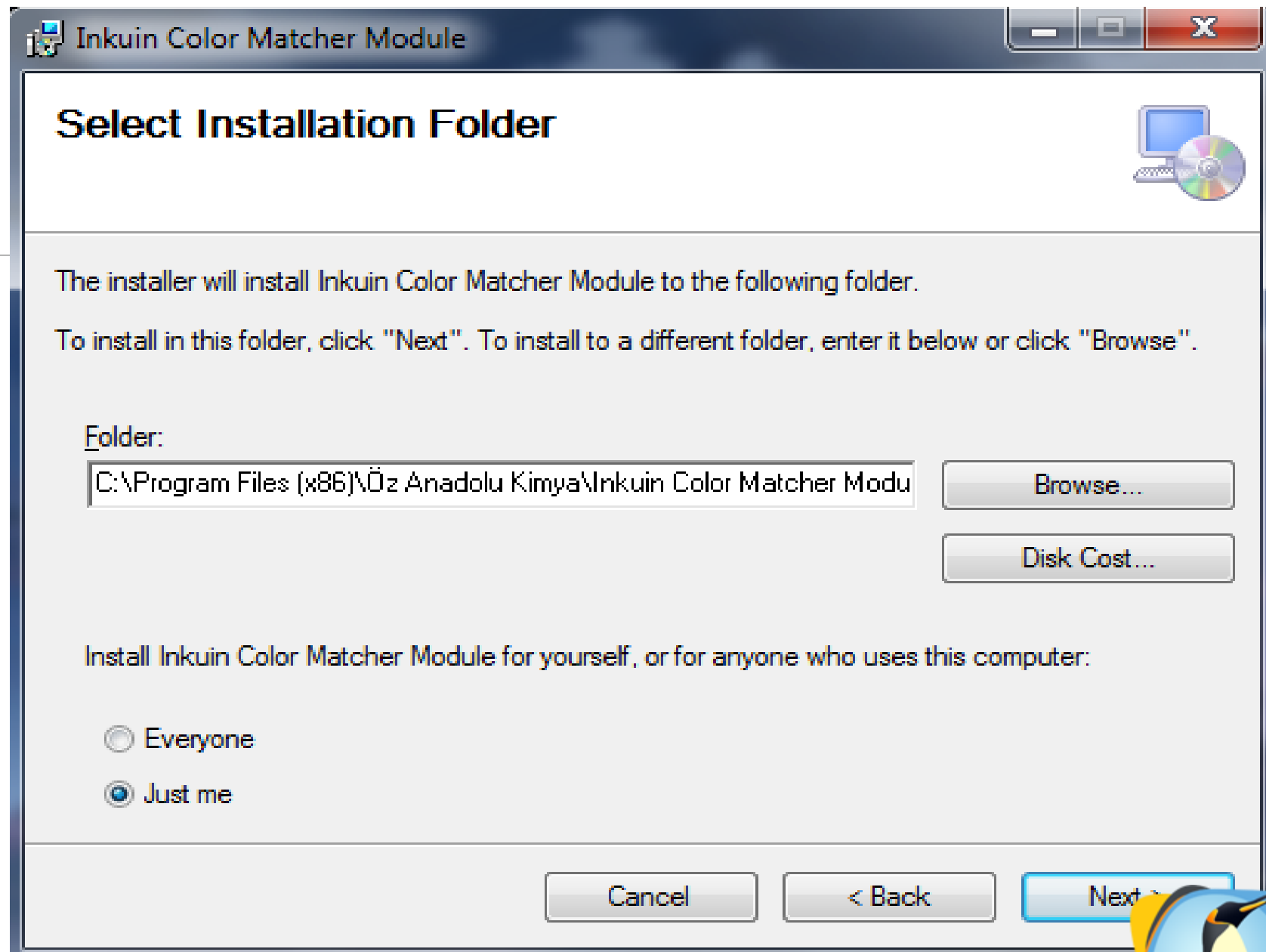


4) Click «Next» to proceed.

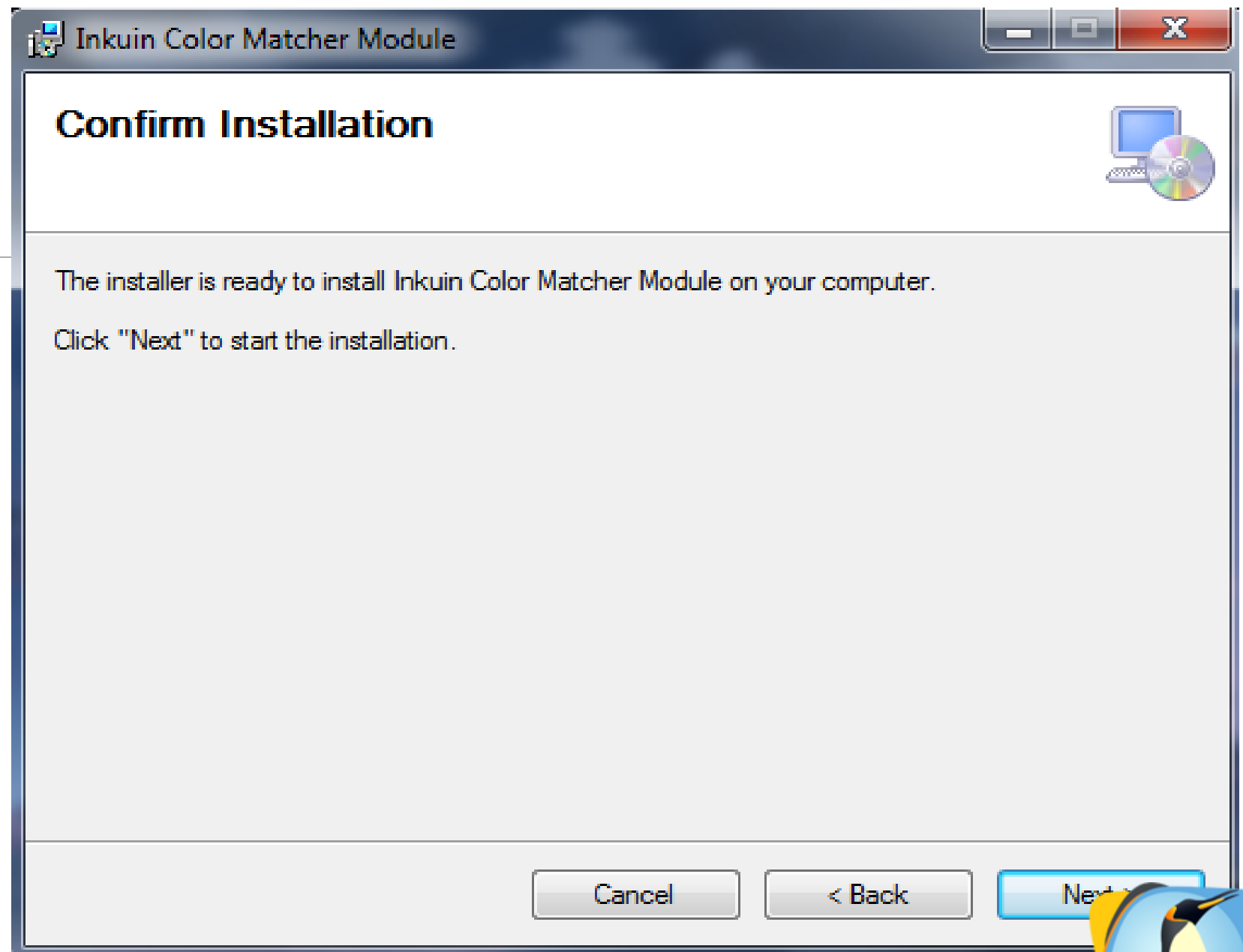


5) Select «Installation» folder, you can change it if you want to (does not recommended for further instructions).

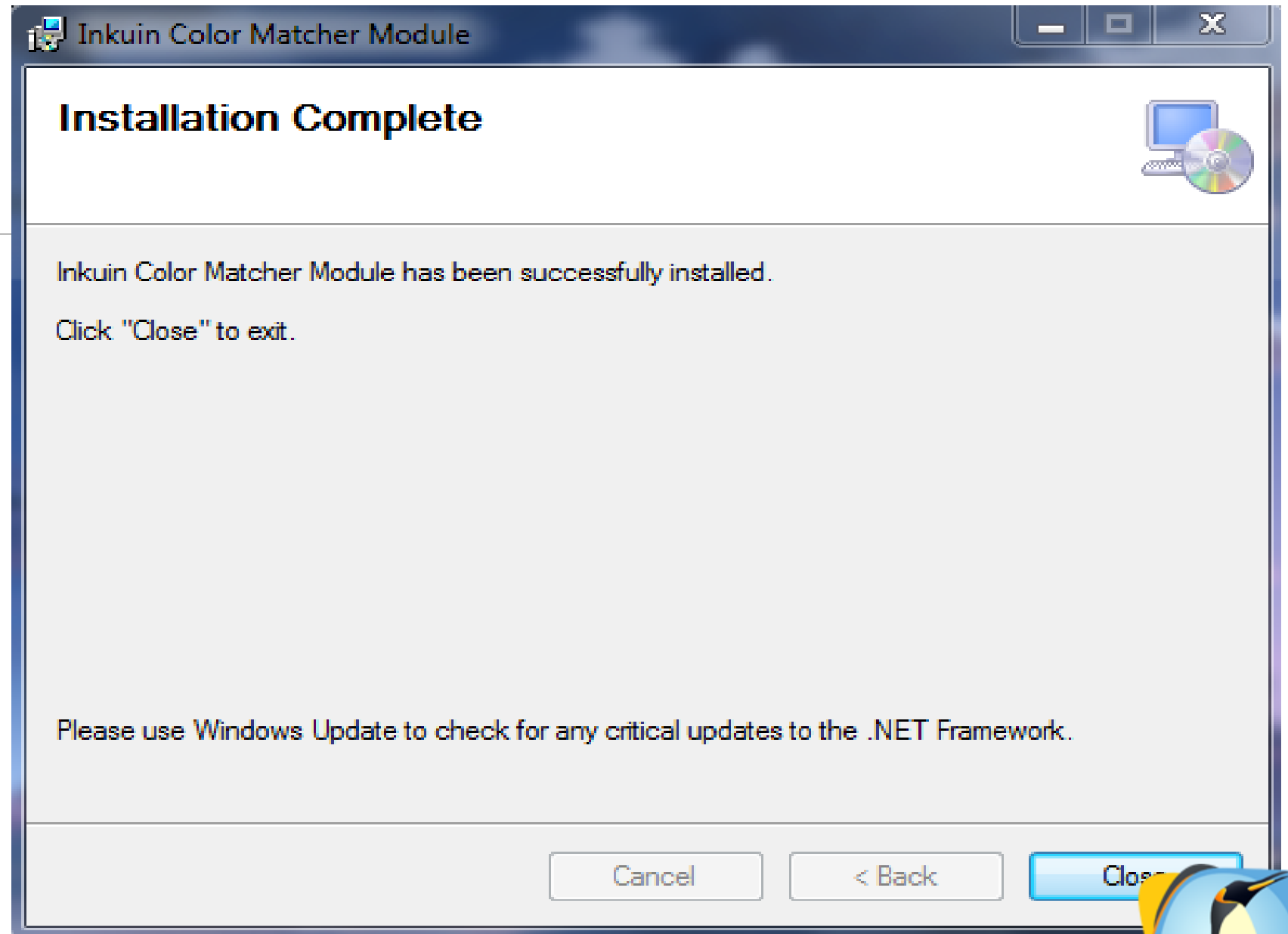
Do not forget to choose «Everyone» to give permission for all users of the computer.



6) Setup wizard will ask one last confirmation. Click next to continue.



7) After installation completed, you will see a shortcut on your desktop.






8) To use the software in English language, do not forget to follow the instructions on «Inkuin Security Arrangements for English Language» file.

Basically, you will need to give permission of «Öz Anadolu Kimya» folder to «Everyone» to use it in English. For further instructions, please check the file.


Inkuin Color Matcher (v.1.1)



Inkuin  
SCREEN PRINTING CHEMICALS

Inkuin Color Matcher

Show Formula



Inkuin  
SCREEN PRINTING CHEMICALS

Base	Comp.Code	Component Name	Percent	Total Kgs
WATER BASED	DP 4005	DP 4005 WHITE	8,902 %	4,451
Serie	PG 2800	PG 2800	4,073 %	2,036
4000	PG 2835	PG 2835	0,011 %	0,005
Color Group	PG 2805	PG 2805	0,659 %	0,329
U	PG 2860	PG 2860	0,257 %	0,129
Color No	DP 4000	DP 4000 CLEAR	86,098 %	43,049

Amount

Unit

50

Kgs

Show Formula

About...

Exit

English

Print Formula

100,00 %50,000

---

-For further information and your questions, please send an e-mail to [istanbul@inkuin.com](mailto:istanbul@inkuin.com)

-Or you can contact us via our [Facebook](#) or [Instagram](#) accounts.



---

THANK YOU FOR USING OUR SOFTWARE

